

THE BROOKS

Brookview.

**P
R
E**

One

The Brooks
The Living
Experience



The Brooks is in short, life and nature flowing in absolute harmony to dictate an unsurpassed living experience at your doorstep.

An authentic living experience, alive with natural streams and breathing terrains to refresh integrated living in the heart of New Cairo.

Inhale beauty and allow the ever-flowing sound of water to teleport you into a whole new tranquil dimension where beauty abounds to awaken the senses. This is an exclusive opportunity to decelerate in floating landscapes connect with your inner self, as well as loved ones, in a destination rhythmically flowing with nature's pace beyond the conventional.

Masterplanned on 195 acres of lush land, The Brooks is an innovative outlook on nature-inspired living in the heart of New Cairo.

Imaginatively designed by leading architect YBA, every aspect of The Brooks captures an abundant variety of natural gifts to reflect a harmonious aesthetic not offered elsewhere. The elemental beauty of the project lies in a flowing, blend of expansive terrains, soothing waterfalls and running streams to paint a picturesque lifestyle where exceptional views stretch to infinity and beyond.



Natural Beauty to
Infinity and Beyond.



Start your day with a brisk jog,
as flowing landscapes follow to
inspire you.

Designed with residents' well-being in mind, The Brooks boasts five residential districts that directly open onto a 4 km jogging and biking track, encouraging a healthy flow and daily recreation amidst breathtaking nature. Start your day with a brisk jog, as flowing landscapes follow to inspire you, then energize with a like-minded community in a 14-acre Sports Club, offering a variety of activities, as well as training programs to awaken the athlete in you.

When the day draws to an end, head out to an elegantly appointed Club House to soak up magical views, as you indulge in refined delicacies with friends and loved ones, perfected by impeccable service. The Brooks is in short, life and nature flowing in absolute harmony to dictate an unsurpassed living experience at your doorstep.



Two

Location

A Slice of Paradise in the
Heart of the City.

Planned with residents' ultimate convenience and connectivity in mind, the project boasts a prime location in the lively residential neighborhood of the 5th Settlement.

The Brooks is a sanctuary of calm to respite from the stresses of city life while having direct access to the beating heart of New Cairo whenever you like. Planned with residents' ultimate convenience and connectivity in mind, the project boasts a prime location in the lively residential neighborhood of the 5th Settlement, placing your life at the intersection of leading educational establishments, vital business hubs and commercial excellence.

Nestled minutes away from the Ring Road, The Brooks is seamlessly interconnected to Cairo's main attraction points while lying at close proximity to Maadi, Nasr City, and Cairo International Airport.





The Martyr
Corridor

Ring Road

THE **BROOKS**

Le Reve

Stone Residence
Compound

Stone Park

Gharb El-Golf

Katameya Heights

Saad Zaghoul Axis

El Katameya

District No. 5

District No. 4

District No. 3

El Diplomaseen

Gamal Abdel Nasser

West Arabella

Arabella

The 3rd District

Three

Brookview
An Elevated
Dream-like Reality







Brookview presents a well-curated collection of signature unit types to suit every taste and lifestyle.

Ideal for young couples with a reverence for the finer things boasts a prime location in the lively residential neighborhood of the 5th Settlement. , the destination offers spacious duplexes and charming apartments, in addition to expansive penthouses.

All spaces invite you to explore the seamless blend of unmatched style and intricate luxury, promising to teleport you into a modern living experience that rises with your ambitions high above ordinary limits.





Masterplan



Brookview Masterplan

Four

Disclaimer: Drawings scales are as shown in their relevant pages. If no scale is shown or written, the drawing is not to scale and is intended for illustrative concept purposes. Any areas/dimensions shown in this package are subject to vary within further design stages against final Architecture, Landscape design/brief, engineering requirements & municipal regulations. The final areas/dimensions shall be confirmed after conducting coordination procedures with the involved departments & consultants (e.g. Architecture - Roads - Infrastructure, etc.) to conclude the best possible outcomes as per regulations, standards and construction cost. All included calculations - found in this package - in terms of areas, locations & configurations could vary as per any change in the municipal, architecture & operators' requirements.

Types DUPLICES





Garden Duplex



Loft Duplex



Loft Duplex



Ground Floor Duplexes

BUILDING 3

Unit 04
Garden Duplex F
235 m²

Unit 03
Garden Duplex E
249 m²

BUILDING 2

Unit 04
Garden Duplex D
249 m²

Unit 03
Garden Duplex C
244 m²

BUILDING 1

Unit 04
Garden Duplex B
249 m²

Unit 03
Garden Duplex A
235 m²



Building 3

Building 2

Building 1



Unit 04 – Garden Duplex F

235 m²

Entrance Lobby	1.50 × 1.65
Reception	4.60 × 3.60
Terrace	2.75 × 3.80
Dining & Living Room	6.10 × 4.25
Lobby	1.20 × 1.70
Kitchen	3.10 × 3.60
Maid's Room	2.15 × 1.75
Maid's Toilet	1.20 × 1.75
Guest Toilet	1.70 × 1.80
Storage Room	1.45 × 1.85

Unit 03 – Garden Duplex E

249 m²

Entrance Lobby	3.00 × 1.50
Reception	4.60 × 3.70
Terrace	2.60 × 3.70
Dining & Living Room	7.75 × 4.20
Lobby	1.20 × 1.70
Kitchen	3.10 × 3.60
Maid's Room	2.15 × 1.75
Maid's Toilet	1.20 × 1.75
Guest Toilet	1.70 × 1.75
Storage Room	1.45 × 1.85

Unit 04 – Garden Duplex D

249 m²

Entrance Lobby	3.00 × 1.50
Reception	4.60 × 3.70
Terrace	2.60 × 3.70
Dining & Living Room	7.75 × 4.20
Lobby	1.20 × 1.70
Kitchen	3.10 × 3.60
Maid's Room	2.15 × 1.75
Maid's Toilet	1.20 × 1.75
Guest Toilet	1.70 × 1.75
Storage Room	1.45 × 1.85

Unit 03 – Garden Duplex C

244 m²

Entrance Lobby	1.50 × 1.65
Reception	4.60 × 3.60
Terrace	2.75 × 3.80
Dining & Living Room	7.55 × 4.25
Lobby	1.20 × 1.70
Kitchen	3.10 × 3.60
Maid's Room	2.15 × 1.75
Maid's Toilet	1.20 × 1.75
Guest Toilet	1.70 × 1.80
Storage Room	1.45 × 1.85

Unit 04 – Garden Duplex B

249 m²

Entrance Lobby	3.00 × 1.50
Reception	4.60 × 3.70
Terrace	2.60 × 3.70
Dining & Living Room	7.75 × 4.20
Lobby	1.20 × 1.70
Kitchen	3.10 × 3.60
Maid's Room	2.15 × 1.75
Maid's Toilet	1.20 × 1.75
Guest Toilet	1.70 × 1.75
Storage Room	1.45 × 1.85

Unit 03 – Garden Duplex A

235 m²

Entrance Lobby	1.50 × 1.65
Reception	4.60 × 3.60
Terrace	2.75 × 3.80
Dining & Living Room	6.10 × 4.25
Lobby	1.20 × 1.70
Kitchen	3.10 × 3.60
Maid's Room	2.15 × 1.75
Maid's Toilet	1.20 × 1.75
Guest Toilet	1.70 × 1.80
Storage Room	1.45 × 1.85

First Floor Duplexes

BUILDING 3

Unit 04
Garden Duplex F
235 m²

Unit 03
Garden Duplex E
249 m²

BUILDING 2

Unit 04
Garden Duplex D
249 m²

Unit 03
Garden Duplex C
244 m²

BUILDING 1

Unit 04
Garden Duplex B
249 m²

Unit 03
Garden Duplex A
235 m²



Building 3

Building 2

Building 1



Unit 04 – Garden Duplex F
235 m²

Entrance Lobby	1.45 × 3.20
Corridor	6.00 × 1.40
Master Bedroom	4.00 × 3.60
Terrace 01	1.20 × 1.80
Dressing Room 01	2.40 × 1.55
Master Bathroom	2.40 × 1.80
Bedroom 01	3.00 × 3.60
Bedroom 01 Lobby	1.50 × 1.20
Dressing Room 02	1.40 × 2.40
Bedroom 02	4.50 × 4.20
Terrace 02	4.40 × 1.25
Bathroom	1.70 × 3.10

Unit 03 – Garden Duplex E
249 m²

Entrance Lobby	1.45 × 1.70
Corridor	6.00 × 1.40
Master Bedroom	4.00 × 3.60
Terrace 01	1.20 × 1.80
Dressing Room 01	2.40 × 1.55
Master Bathroom	2.40 × 1.80
Bedroom 01	3.00 × 3.60
Bedroom 01 Lobby	1.50 × 1.20
Dressing Room 02	1.40 × 2.40
Bedroom 02	4.50 × 4.20
Terrace 02	4.40 × 1.25
Bathroom	1.70 × 3.10

Unit 04 – Garden Duplex D
249 m²

Entrance Lobby	1.45 × 3.20
Corridor	6.00 × 1.40
Master Bedroom	4.00 × 3.60
Terrace 01	1.20 × 1.80
Dressing Room 01	2.40 × 1.55
Master Bathroom	2.40 × 1.80
Bedroom 01	3.00 × 3.60
Bedroom 01 Lobby	1.50 × 1.20
Dressing Room 02	1.40 × 2.40
Bedroom 02	4.50 × 4.20
Terrace 02	4.40 × 1.25
Bathroom	1.70 × 3.10

Unit 03 – Garden Duplex C
244 m²

Entrance Lobby	1.45 × 1.70
Corridor	6.00 × 1.40
Master Bedroom	4.00 × 3.60
Terrace 01	1.20 × 1.80
Dressing Room 01	2.40 × 1.55
Master Bathroom	2.40 × 1.80
Bedroom 01	3.00 × 3.60
Bedroom 01 Lobby	1.50 × 1.20
Dressing Room 02	1.40 × 2.40
Bedroom 02	4.50 × 4.20
Terrace 02	4.40 × 1.25
Bathroom	1.70 × 3.10

Unit 04 – Garden Duplex B
249 m²

Entrance Lobby	1.45 × 3.20
Corridor	6.00 × 1.40
Master Bedroom	4.00 × 3.60
Terrace 01	1.20 × 1.80
Dressing Room 01	2.40 × 1.55
Master Bathroom	2.40 × 1.80
Bedroom 01	3.00 × 3.60
Bedroom 01 Lobby	1.50 × 1.20
Dressing Room 02	1.40 × 2.40
Bedroom 02	4.50 × 4.20
Terrace 02	4.40 × 1.25
Bathroom	1.70 × 3.10

Unit 03 – Garden Duplex A
235 m²

Entrance Lobby	1.45 × 1.70
Corridor	6.00 × 1.40
Master Bedroom	4.00 × 3.60
Terrace 01	1.20 × 1.80
Dressing Room 01	2.40 × 1.55
Master Bathroom	2.40 × 1.80
Bedroom 01	3.00 × 3.60
Bedroom 01 Lobby	1.50 × 1.20
Dressing Room 02	1.40 × 2.40
Bedroom 02	4.50 × 4.20
Terrace 02	4.40 × 1.25
Bathroom	1.70 × 3.10

Second Floor Duplexes

BUILDING 3

Unit 10
Terraced Duplex C
236 m²

Unit 09
Loft Duplex C
251 m²

BUILDING 2

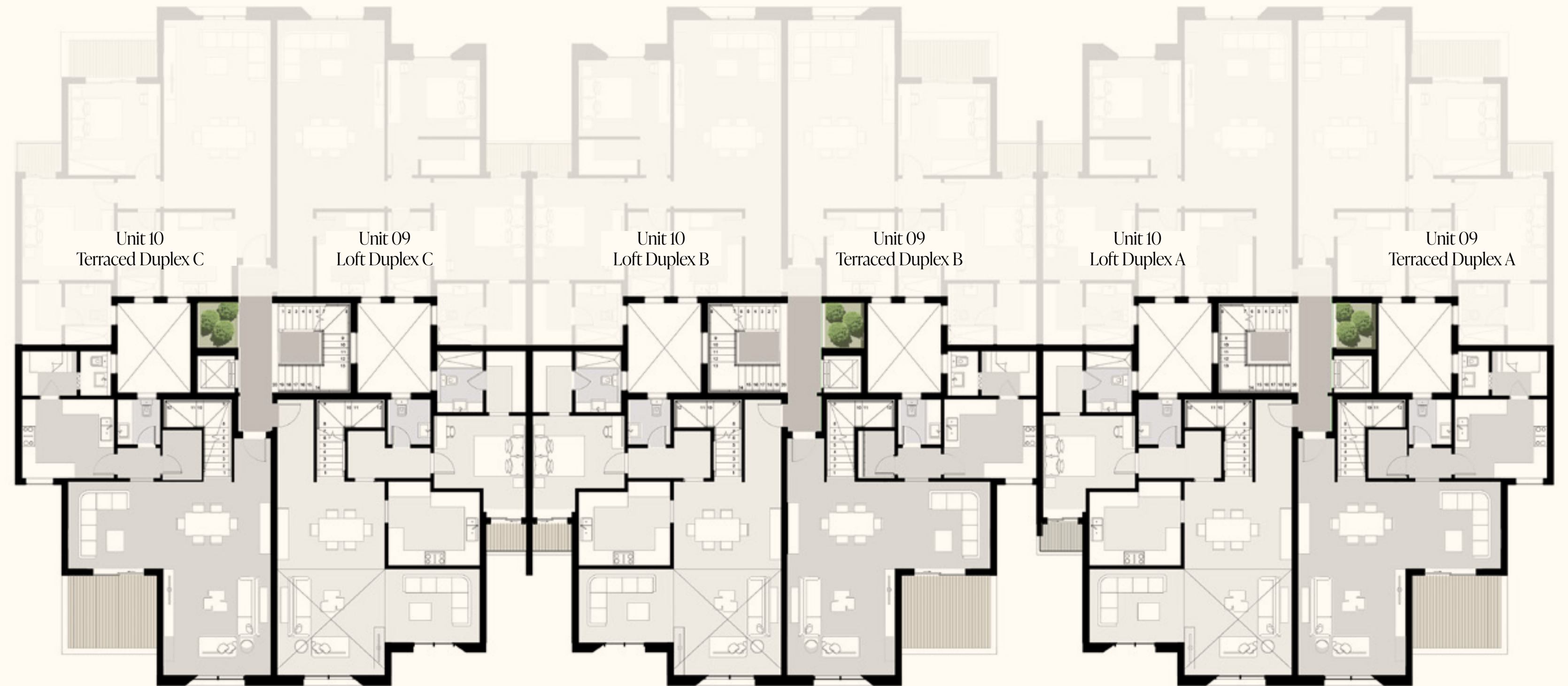
Unit 10
Loft Duplex B
251 m²

Unit 09
Terraced Duplex B
236 m²

BUILDING 1

Unit 10
Loft Duplex A
251 m²

Unit 09
Terraced Duplex A
236 m²



Building 3

Building 2

Building 1



Unit 10 – Terraced Duplex C
236 m²

Entrance Lobby	1.45 × 1.70
Dining & Reception	7.60 × 4.20
Living Room	3.40 × 3.70
Terrace	2.80 × 3.70
Lobby	1.20 × 1.70
Kitchen	3.10 × 3.60
Maid's Room	2.15 × 1.75
Maid's Toilet	1.20 × 1.75
Guest Toilet	1.70 × 1.80
Storage Room	1.45 × 1.85

Unit 09 – Loft Duplex C
251 m²

Entrance Lobby	1.45 × 3.20
Dining & Reception	7.55 × 4.20
Living Room	2.90 × 3.70
Kitchen	3.30 × 3.60
Lobby	1.80 × 3.25
Guest Toilet	1.65 × 1.80
Master Bedroom	4.00 × 3.60
Terrace	1.20 × 1.70
Dressing Room	1.55 × 2.40
Master Bathroom	1.80 × 2.40

Unit 10 – Loft Duplex B
251 m²

Entrance Lobby	1.45 × 3.20
Dining & Reception	7.55 × 4.20
Living Room	2.90 × 3.70
Kitchen	3.30 × 3.60
Lobby	1.80 × 3.25
Guest Toilet	1.65 × 1.80
Master Bedroom	4.00 × 3.60
Terrace	1.20 × 1.70
Dressing Room	1.55 × 2.40
Master Bathroom	1.80 × 2.40

Unit 09 – Terraced Duplex B
236 m²

Entrance Lobby	1.45 × 1.70
Dining & Reception	7.60 × 4.20
Living Room	3.40 × 3.70
Terrace	2.80 × 3.70
Lobby	1.20 × 1.70
Kitchen	3.10 × 3.60
Maid's Room	2.15 × 1.75
Maid's Toilet	1.20 × 1.75
Guest Toilet	1.70 × 1.80
Storage Room	1.45 × 1.85

Unit 10 – Loft Duplex A
251 m²

Entrance Lobby	1.45 × 3.20
Dining & Reception	7.55 × 4.20
Living Room	2.90 × 3.70
Kitchen	3.30 × 3.60
Lobby	1.80 × 3.25
Guest Toilet	1.65 × 1.80
Master Bedroom	4.00 × 3.60
Terrace	1.20 × 1.70
Dressing Room	1.55 × 2.40
Master Bathroom	1.80 × 2.40

Unit 09 – Terraced Duplex A
236 m²

Entrance Lobby	1.45 × 1.70
Dining & Reception	7.60 × 4.20
Living Room	3.40 × 3.70
Terrace	2.80 × 3.70
Lobby	1.20 × 1.70
Kitchen	3.10 × 3.60
Maid's Room	2.15 × 1.75
Maid's Toilet	1.20 × 1.75
Guest Toilet	1.70 × 1.80
Storage Room	1.45 × 1.85

Third Floor Duplexes

BUILDING 3

Unit 10
Terraced Duplex C
236 m²

Unit 09
Loft Duplex C
251 m²

BUILDING 2

Unit 10
Loft Duplex B
251 m²

Unit 09
Terraced Duplex B
236 m²

BUILDING 1

Unit 10
Loft Duplex A
251 m²

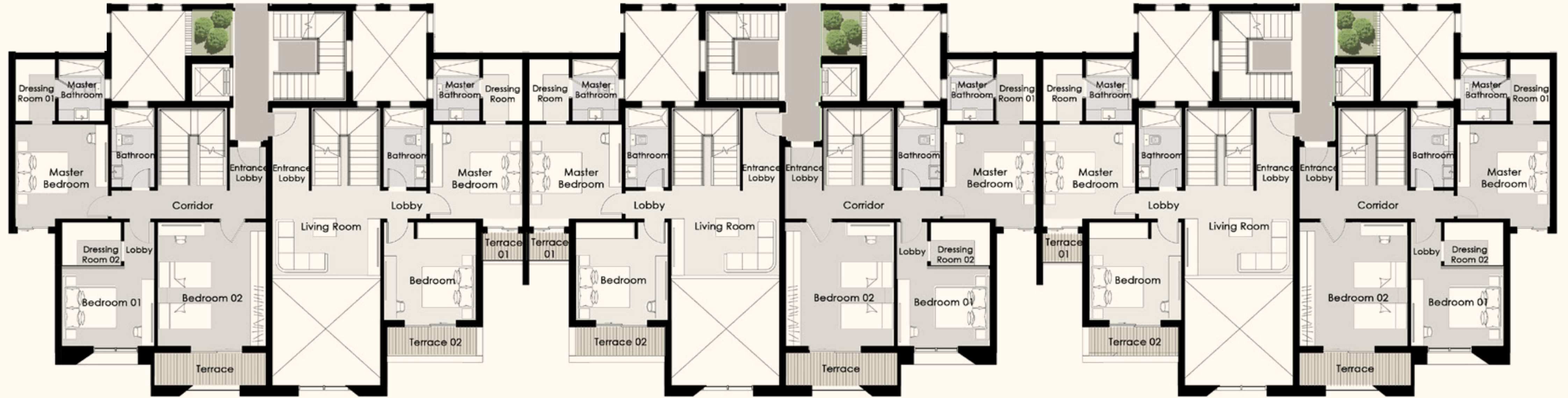
Unit 09
Terraced Duplex A
236 m²



Building 3

Building 2

Building 1



Unit 10 – Terraced Duplex C
236 m²

Entrance Lobby	1.70 × 1.40
Corridor	6.00 × 1.10
Master Bedroom	4.00 × 3.60
Dressing Room 01	2.40 × 1.55
Master Bathroom	2.40 × 1.80
Bedroom 01	3.00 × 3.60
Bedroom 01 Lobby	3.00 × 3.60
Dressing Room 02	2.30 × 1.70
Bedroom 02	4.80 × 4.20
Terrace	4.45 × 1.70
Bathroom	3.10 × 1.70

Unit 09 – Loft Duplex C
251 m²

Entrance Lobby	3.20 × 1.40
Living Room	3.50 × 4.20
Lobby	1.10 × 1.80
Master Bedroom	4.00 × 3.60
Terrace 01	1.20 × 1.55
Dressing Room	2.40 × 1.55
Master Bathroom	2.40 × 1.80
Bedroom	3.60 × 3.80
Terrace 02	3.70 × 1.40
Bathroom	3.10 × 1.70

Unit 10 – Loft Duplex B
251 m²

Entrance Lobby	3.20 × 1.40
Living Room	3.50 × 4.20
Lobby	1.10 × 1.80
Master Bedroom	4.00 × 3.60
Terrace 01	1.20 × 1.55
Dressing Room	2.40 × 1.55
Master Bathroom	2.40 × 1.80
Bedroom	3.60 × 3.80
Terrace 02	3.70 × 1.40
Bathroom	3.10 × 1.70

Unit 09 – Terraced Duplex B
236 m²

Entrance Lobby	1.70 × 1.40
Corridor	6.00 × 1.10
Master Bedroom	4.00 × 3.60
Dressing Room 01	2.40 × 1.55
Master Bathroom	2.40 × 1.80
Bedroom 01	3.00 × 3.60
Bedroom 01 Lobby	3.00 × 3.60
Dressing Room 02	2.30 × 1.70
Bedroom 02	4.80 × 4.20
Terrace	4.45 × 1.70
Bathroom	3.10 × 1.70

Unit 10 – Loft Duplex A
251 m²

Entrance Lobby	3.20 × 1.40
Living Room	3.50 × 4.20
Lobby	1.10 × 1.80
Master Bedroom	4.00 × 3.60
Terrace 01	1.20 × 1.55
Dressing Room	2.40 × 1.55
Master Bathroom	2.40 × 1.80
Bedroom	3.60 × 3.80
Terrace 02	3.70 × 1.40
Bathroom	3.10 × 1.70

Unit 09 – Terraced Duplex A
236 m²

Entrance Lobby	1.70 × 1.40
Corridor	6.00 × 1.10
Master Bedroom	4.00 × 3.60
Dressing Room 01	2.40 × 1.55
Master Bathroom	2.40 × 1.80
Bedroom 01	3.00 × 3.60
Bedroom 01 Lobby	3.00 × 3.60
Dressing Room 02	2.30 × 1.70
Bedroom 02	4.80 × 4.20
Terrace	4.45 × 1.70
Bathroom	3.10 × 1.70

Five

Disclaimer: Drawings scales are as shown in their relevant pages. If no scale is shown or written, the drawing is not to scale and is intended for illustrative concept purposes. Any areas dimensions shown in this package are subject to vary within further design stages against final Architecture, Landscape design/brief, engineering requirements & municipal regulations. The final areas/dimensions shall be confirmed after conducting coordination procedures with the involved departments & consultants (e.g. Architecture - Roads - Infrastructure, etc.) to conclude the best possible outcomes as per regulations, standards and construction cost. All included calculations - found in this package - in terms of areas, locations & configurations could vary as per any change in the municipal, architecture & operators requirements.

Types PENTHOUSES





H01

H02

H03

Fourth Floor Penthouse

Building 3 | Building 2 | Building 1

BUILDING 3

Unit 13
Penthouse F
212 m²

Unit 14
Penthouse E
216 m²

BUILDING 2

Unit 13
Penthouse D
216 m²

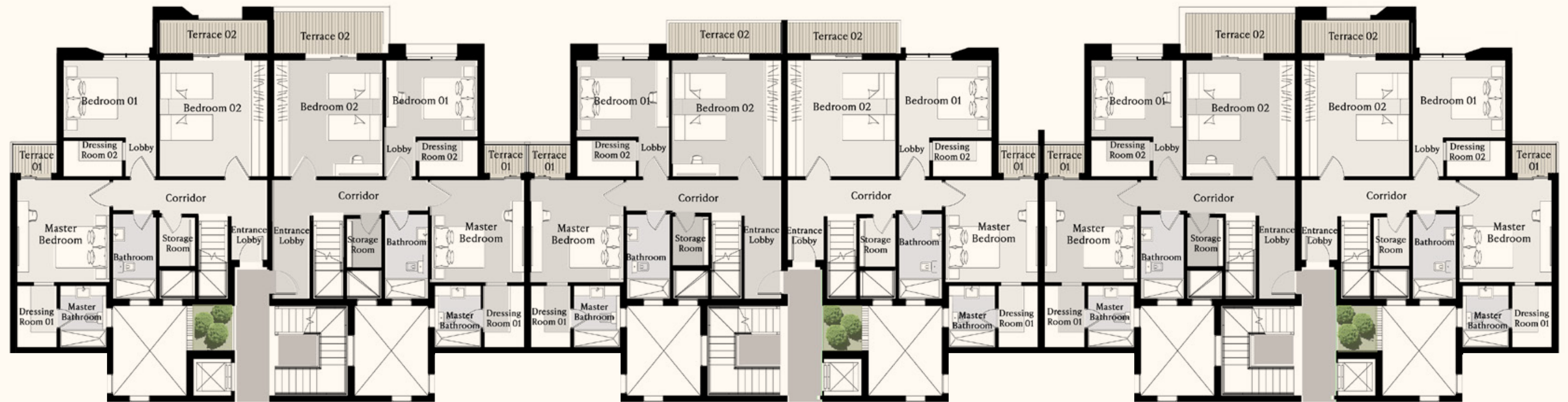
Unit 14
Penthouse C
212 m²

BUILDING 1

Unit 13
Penthouse B
216 m²

Unit 14
Penthouse A
212 m²





Unit 13 – Penthouse F
212 m²

Entrance Lobby	1.40 × 1.70
Corridor	6.00 × 1.40
Master Bedroom	3.60 × 4.00
Terrace 01	1.20 × 1.70
Dressing Room 01	2.40 × 1.55
Master Bathroom	1.80 × 2.40
Bedroom 01	3.00 × 3.60
Bedroom 01 Lobby	1.20 × 1.50
Dressing Room 02	2.30 × 1.40
Bedroom 02	4.50 × 4.20
Terrace 02	4.20 × 1.80
Bathroom	3.10 × 1.70
Storage Room	1.35 × 1.85

Unit 14 – Penthouse E
216 m²

Entrance Lobby	1.40 × 3.20
Corridor	6.00 × 1.40
Master Bedroom	3.60 × 4.00
Terrace 01	1.20 × 1.70
Dressing Room 01	2.40 × 1.55
Master Bathroom	1.80 × 2.40
Bedroom 01	3.00 × 3.55
Bedroom 01 Lobby	1.15 × 1.50
Dressing Room 02	2.30 × 1.40
Bedroom 02	4.50 × 4.20
Terrace 02	4.50 × 1.80
Bathroom	3.10 × 1.70
Storage Room	1.35 × 1.85

Unit 13 – Penthouse D
216 m²

Entrance Lobby	1.40 × 3.20
Corridor	6.00 × 1.40
Master Bedroom	3.60 × 4.00
Terrace 01	1.20 × 1.70
Dressing Room 01	2.40 × 1.55
Master Bathroom	1.80 × 2.40
Bedroom 01	3.00 × 3.55
Bedroom 01 Lobby	1.15 × 1.50
Dressing Room 02	2.30 × 1.40
Bedroom 02	4.50 × 4.20
Terrace 02	4.50 × 1.80
Bathroom	3.10 × 1.70
Storage Room	1.35 × 1.85

Unit 14 – Penthouse C
212 m²

Entrance Lobby	1.40 × 1.70
Corridor	6.00 × 1.40
Master Bedroom	3.60 × 4.00
Terrace 01	1.20 × 1.70
Dressing Room 01	2.40 × 1.55
Master Bathroom	1.80 × 2.40
Bedroom 01	3.00 × 3.60
Bedroom 01 Lobby	1.20 × 1.50
Dressing Room 02	2.30 × 1.40
Bedroom 02	4.50 × 4.20
Terrace 02	4.20 × 1.80
Bathroom	3.10 × 1.70
Storage Room	1.35 × 1.85

Unit 13 – Penthouse B
216 m²

Entrance Lobby	1.40 × 3.20
Corridor	6.00 × 1.40
Master Bedroom	3.60 × 4.00
Terrace 01	1.65 × 1.20
Dressing Room 01	2.40 × 1.55
Master Bathroom	1.80 × 2.40
Bedroom 01	3.00 × 3.55
Bedroom 01 Lobby	1.15 × 1.50
Dressing Room 02	2.30 × 1.40
Bedroom 02	4.50 × 4.20
Terrace 02	4.50 × 1.80
Bathroom	3.10 × 1.70
Storage Room	1.35 × 1.85

Unit 14 – Penthouse A
212 m²

Entrance Lobby	1.40 × 1.70
Corridor	6.00 × 1.40
Master Bedroom	3.60 × 4.00
Terrace 01	1.20 × 1.70
Dressing Room 01	2.40 × 1.55
Master Bathroom	1.80 × 2.40
Bedroom 01	3.00 × 3.60
Bedroom 01 Lobby	1.20 × 1.50
Dressing Room 02	2.30 × 1.40
Bedroom 02	4.50 × 4.20
Terrace 02	4.20 × 1.80
Bathroom	3.10 × 1.70
Storage Room	1.35 × 1.85

Roof Penthouse

BUILDING 3

Unit 13
Penthouse F
212 m²

Unit 14
Penthouse E
216 m²

BUILDING 2

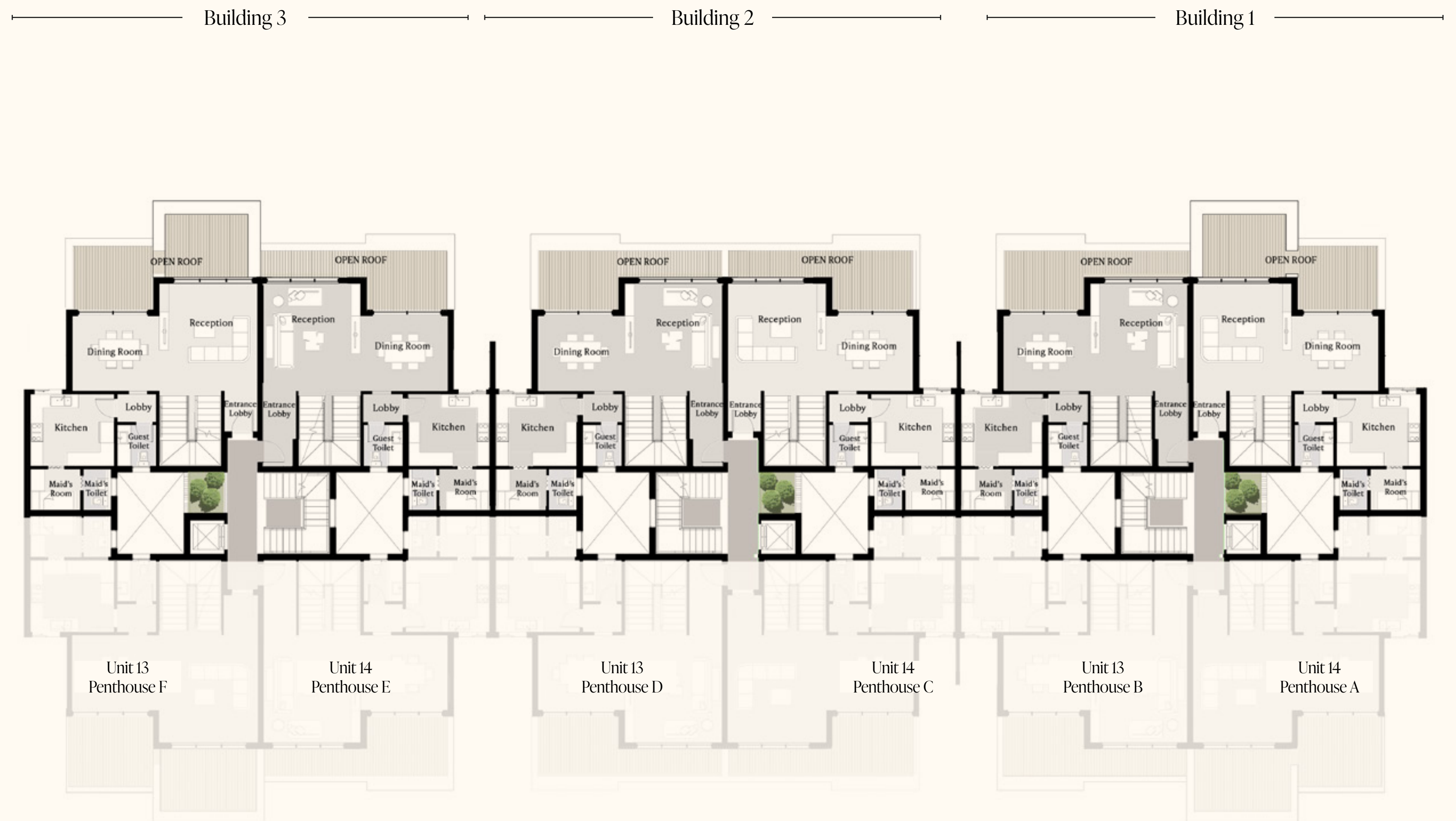
Unit 13
Penthouse D
216 m²

Unit 14
Penthouse C
212 m²

BUILDING 1

Unit 13
Penthouse B
216 m²

Unit 14
Penthouse A
212 m²





Unit 13 – Penthouse F
212 m²

Entrance Lobby	1.70 × 1.40
Reception & Dining	7.90 × 4.60
Lobby	1.70 × 1.20
Guest Toilet	1.75 × 1.70
Kitchen	3.60 × 3.10
Maid's Room	2.15 × 1.75
Maid's Toilet	1.75 × 1.20

Open Roof Area 26 m²

Unit 14 – Penthouse E
216 m²

Entrance Lobby	1.40 × 3.20
Reception & Dining	7.90 × 4.20
Lobby	1.20 × 1.70
Guest Toilet	1.70 × 1.80
Kitchen	3.10 × 3.50
Maid's Room	2.15 × 1.75
Maid's Toilet	1.20 × 1.75

Open Roof Area 19 m²

Unit 13 – Penthouse D
216 m²

Entrance Lobby	1.40 × 3.20
Reception & Dining	7.90 × 4.60
Lobby	1.20 × 1.70
Guest Toilet	1.70 × 1.80
Kitchen	3.10 × 3.50
Maid's Room	2.15 × 1.75
Maid's Toilet	1.20 × 1.75

Open Roof Area 19 m²

Unit 14 – Penthouse C
212 m²

Entrance Lobby	1.70 × 1.40
Reception & Dining	7.90 × 4.60
Lobby	1.70 × 1.20
Guest Toilet	1.75 × 1.70
Kitchen	3.60 × 3.10
Maid's Room	2.15 × 1.75
Maid's Toilet	1.75 × 1.20

Open Roof Area 19 m²

Unit 13 – Penthouse B
216 m²

Entrance Lobby	1.40 × 3.20
Reception & Dining	7.90 × 4.60
Lobby	1.20 × 1.70
Guest Toilet	1.70 × 1.80
Kitchen	3.10 × 3.50
Maid's Room	2.15 × 1.75
Maid's Toilet	1.20 × 1.75

Open Roof Area 19 m²

Unit 14 – Penthouse A
212 m²

Entrance Lobby	1.70 × 1.40
Reception & Dining	7.90 × 4.60
Lobby	1.70 × 1.20
Guest Toilet	1.75 × 1.70
Kitchen	3.60 × 3.10
Maid's Room	2.15 × 1.75
Maid's Toilet	1.75 × 1.20

Open Roof Area 26 m²

Fourth Floor Penthouse

BUILDING 3

Unit 16
Penthouse L
212 m²

Unit 15
Penthouse K
216 m²

BUILDING 2

Unit 16
Penthouse J
216 m²

Unit 15
Penthouse I
212 m²

BUILDING 1

Unit 16
Penthouse H
216 m²

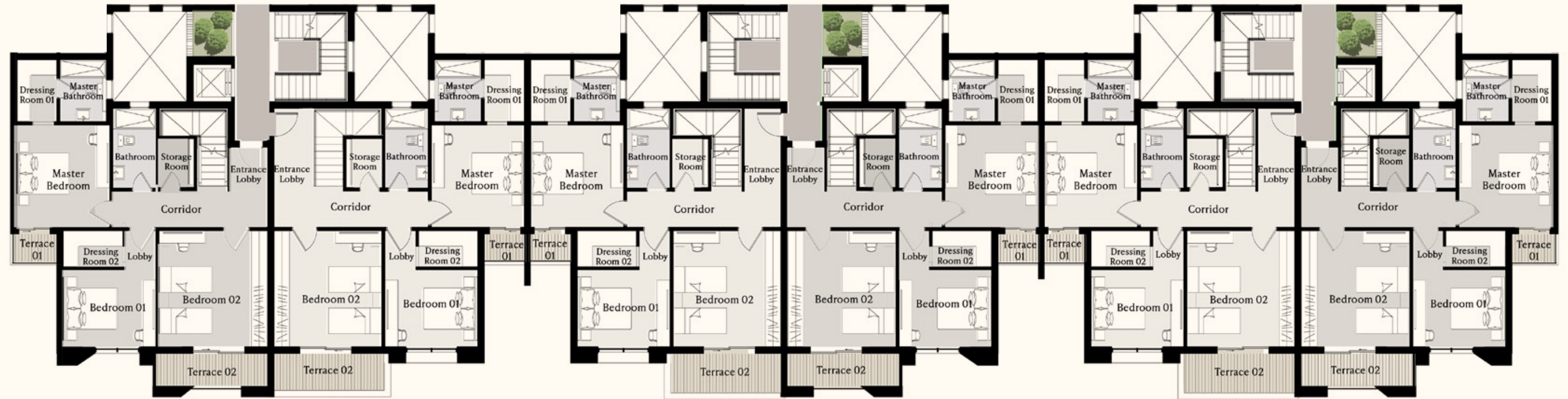
Unit 15
Penthouse G
212 m²



Building 3

Building 2

Building 1



Unit 16 – Penthouse L
212 m²

Entrance Lobby	1.70 × 1.45
Corridor	6.00 × 1.40
Master Bedroom	4.00 × 3.60
Terrace 01	1.80 × 1.20
Dressing Room 01	2.40 × 1.55
Master Bathroom	1.80 × 2.40
Bedroom 01	3.60 × 3.00
Bedroom 01 Lobby	1.50 × 1.20
Dressing Room 02	2.40 × 1.40
Bedroom 02	4.50 × 4.20
Terrace 02	4.50 × 1.70
Bathroom	3.10 × 1.70
Storage Room	1.35 × 1.85

Unit 15 – Penthouse K
216 m²

Entrance Lobby	3.20 × 1.40
Corridor	6.00 × 1.40
Master Bedroom	4.00 × 3.60
Terrace 01	1.65 × 1.20
Dressing Room 01	2.40 × 1.55
Master Bathroom	1.80 × 2.40
Bedroom 01	3.60 × 3.00
Bedroom 01 Lobby	1.50 × 1.20
Dressing Room 02	2.30 × 1.40
Bedroom 02	4.50 × 4.20
Terrace 02	4.60 × 1.70
Bathroom	3.10 × 1.70
Storage Room	1.35 × 1.85

Unit 16 – Penthouse J
216 m²

Entrance Lobby	3.20 × 1.40
Corridor	6.00 × 1.40
Master Bedroom	4.00 × 3.60
Terrace 01	1.65 × 1.20
Dressing Room 01	2.40 × 1.55
Master Bathroom	1.80 × 2.40
Bedroom 01	3.60 × 3.00
Bedroom 01 Lobby	1.50 × 1.20
Dressing Room 02	2.30 × 1.40
Bedroom 02	4.50 × 4.20
Terrace 02	4.60 × 1.70
Bathroom	3.10 × 1.70
Storage Room	1.35 × 1.85

Unit 15 – Penthouse I
212 m²

Entrance Lobby	1.70 × 1.45
Corridor	6.00 × 1.40
Master Bedroom	4.00 × 3.60
Terrace 01	1.80 × 1.20
Dressing Room 01	2.40 × 1.55
Master Bathroom	1.80 × 2.40
Bedroom 01	3.60 × 3.00
Bedroom 01 Lobby	1.50 × 1.20
Dressing Room 02	2.40 × 1.40
Bedroom 02	4.50 × 4.20
Terrace 02	4.50 × 1.70
Bathroom	3.10 × 1.70
Storage Room	1.35 × 1.85

Unit 16 – Penthouse H
216 m²

Entrance Lobby	3.20 × 1.40
Corridor	6.00 × 1.40
Master Bedroom	4.00 × 3.60
Terrace 01	1.65 × 1.20
Dressing Room 01	2.40 × 1.55
Master Bathroom	1.80 × 2.40
Bedroom 01	3.60 × 3.00
Bedroom 01 Lobby	1.50 × 1.20
Dressing Room 02	2.30 × 1.40
Bedroom 02	4.50 × 4.20
Terrace 02	4.60 × 1.70
Bathroom	3.10 × 1.70
Storage Room	1.35 × 1.85

Unit 15 – Penthouse G
212 m²

Entrance Lobby	1.70 × 1.45
Corridor	6.00 × 1.40
Master Bedroom	4.00 × 3.60
Terrace 01	1.80 × 1.20
Dressing Room 01	2.40 × 1.55
Master Bathroom	1.80 × 2.40
Bedroom 01	3.60 × 3.00
Bedroom 01 Lobby	1.50 × 1.20
Dressing Room 02	2.40 × 1.40
Bedroom 02	4.50 × 4.20
Terrace 02	4.50 × 1.70
Bathroom	3.10 × 1.70
Storage Room	1.35 × 1.85

Roof Penthouse

BUILDING 3

Unit 16
Penthouse L
212 m²

Unit 15
Penthouse K
216 m²

BUILDING 2

Unit 16
Penthouse J
216 m²

Unit 15
Penthouse I
212 m²

BUILDING 1

Unit 16
Penthouse H
216 m²

Unit 15
Penthouse G
212 m²



Building 3

Building 2

Building 1



Unit 16 – Penthouse L
212 m²

Entrance Lobby	1.70 X 1.50
Reception & Dining	7.90 X 4.80
Lobby	1.70 X 1.20
Guest Toilet	1.75 X 1.70
Kitchen	3.60 X 3.10
Maid's Room	2.15 X 1.75
Maid's Toilet	1.75 X 1.20

Open Roof Area 26 m²

Unit 15 – Penthouse K
216 m²

Entrance Lobby	3.20 X 1.40
Reception & Dining	7.90 X 4.60
Lobby	1.70 X 1.20
Guest Toilet	1.75 X 1.70
Kitchen	3.60 X 3.10
Maid's Room	2.15 X 1.75
Maid's Toilet	1.75 X 1.20

Open Roof Area 19 m²

Unit 16 – Penthouse J
216 m²

Entrance Lobby	3.20 X 1.40
Reception & Dining	7.90 X 4.60
Lobby	1.70 X 1.20
Guest Toilet	1.75 X 1.70
Kitchen	3.60 X 3.10
Maid's Room	2.15 X 1.75
Maid's Toilet	1.75 X 1.20

Open Roof Area 19 m²

Unit 15 – Penthouse I
212 m²

Entrance Lobby	1.70 X 1.50
Reception & Dining	7.90 X 4.80
Lobby	1.70 X 1.20
Guest Toilet	1.80 X 1.70
Kitchen	3.60 X 3.10
Maid's Room	2.15 X 1.75
Maid's Toilet	1.75 X 1.20

Open Roof Area 19 m²

Unit 16 – Penthouse H
216 m²

Entrance Lobby	3.20 X 1.40
Reception & Dining	7.90 X 4.60
Lobby	1.70 X 1.20
Guest Toilet	1.75 X 1.70
Kitchen	3.60 X 3.10
Maid's Room	2.15 X 1.75
Maid's Toilet	1.75 X 1.20

Open Roof Area 19 m²

Unit 15 – Penthouse G
212 m²

Entrance Lobby	1.70 X 1.50
Reception & Dining	7.90 X 4.80
Lobby	1.70 X 1.20
Guest Toilet	1.80 X 1.70
Kitchen	3.60 X 3.10
Maid's Room	2.15 X 1.75
Maid's Toilet	1.75 X 1.20

Open Roof Area 26 m²

Six

Disclaimer: Drawings scales are as shown in their relevant pages. If no scale is shown or written, the drawing is not to scale and is intended for illustrative concept purposes. Any areas/dimensions shown in this package are subject to vary within further design stages against final Architecture, Landscape design/brief, engineering requirements & municipal regulations. The final areas/dimensions shall be confirmed after conducting coordination procedures with the involved departments & consultants (e.g. Architecture - Roads - Infrastructure, etc.) to conclude the best possible outcomes as per regulations, standards and construction cost. All included calculations - found in this package - in terms of areas, locations & configurations could vary as per any change in the municipal, architecture & operators' requirements.

Types APARTMENTS





H01

H02

H03



H01

Ground Floor Apartments

BUILDING 3

Unit 01
1 Bedroom Apt.
105 m²

Unit 02
2 Bedroom Apt.
129 m²

BUILDING 2

Unit 01
2 Bedroom Apt.
129 m²

Unit 02
1 Bedroom Apt.
105 m²

BUILDING 1

Unit 01
2 Bedroom Apt.
129 m²

Unit 02
1 Bedroom Apt.
105 m²





Unit 01 – 1 Bedroom Apt.
105 m²

Reception & Dining	6.70 × 4.45
Terrace 01	4.80 × 2.50
Lobby	1.70 × 1.20
Master Bedroom	4.30 × 3.60
Terrace 02	1.90 × 1.70
Dressing Room	2.10 × 1.55
Master Bathroom	2.10 × 1.80
Guest Toilet	1.75 × 1.70
Kitchen	3.10 × 2.65

Unit 02 – 2 Bedroom Apt.
129 m²

Reception & Dining	7.60 × 4.00
Lobby	1.80 × 1.40
Master Bedroom	4.00 × 3.60
Terrace 01	1.55 × 1.30
Dressing Room 01	2.40 × 1.55
Master Bathroom	2.40 × 1.80
Bedroom	3.45 × 3.00
Terrace 02	3.65 × 1.50
Bedroom Lobby	1.05 × 1.50
Dressing Room 02	2.30 × 1.40
Bathroom	3.10 × 1.70
Kitchen	3.10 × 3.05

Unit 01 – 2 Bedroom Apt.
129 m²

Reception & Dining	4.05 × 7.60
Lobby	1.80 × 1.40
Master Bedroom	4.00 × 3.60
Terrace 01	1.55 × 1.30
Dressing Room 01	2.40 × 1.55
Master Bathroom	2.40 × 1.80
Bedroom	3.45 × 3.00
Terrace 02	3.65 × 1.50
Bedroom Lobby	1.50 × 1.10
Dressing Room 02	2.30 × 1.40
Bathroom	3.10 × 1.70
Kitchen	3.10 × 3.05

Unit 02 – 1 Bedroom Apt.
105 m²

Reception & Dining	6.70 × 4.45
Terrace 01	4.80 × 2.50
Lobby	1.70 × 1.20
Master Bedroom	4.30 × 3.60
Terrace 02	1.90 × 1.70
Dressing Room	2.10 × 1.55
Master Bathroom	2.10 × 1.80
Guest Toilet	1.75 × 1.70
Kitchen	3.10 × 2.65

Unit 01 – 2 Bedroom Apt.
129 m²

Reception & Dining	4.00 × 7.60
Lobby	1.80 × 1.40
Master Bedroom	4.00 × 3.60
Terrace 01	1.55 × 1.30
Dressing Room 01	2.40 × 1.55
Master Bathroom	2.40 × 1.80
Bedroom	3.45 × 3.00
Terrace 02	3.65 × 1.50
Bedroom Lobby	1.50 × 1.10
Dressing Room 02	2.30 × 1.40
Bathroom	3.10 × 1.70
Kitchen	3.10 × 3.05

Unit 02 – 1 Bedroom Apt.
105 m²

Reception & Dining	6.70 × 4.45
Terrace 01	4.80 × 2.50
Lobby	1.70 × 1.20
Master Bedroom	4.30 × 3.60
Terrace 02	1.90 × 1.70
Dressing Room	2.10 × 1.55
Master Bathroom	2.10 × 1.80
Guest Toilet	1.75 × 1.70
Kitchen	3.10 × 2.65

First Floor Apartments

BUILDING 3

Unit 05
2 Bedroom Apt.
124 m²

Unit 06
2 Bedroom Apt.
126 m²

BUILDING 2

Unit 05
2 Bedroom Apt.
126 m²

Unit 06
2 Bedroom Apt.
126 m²

BUILDING 1

Unit 05
2 Bedroom Apt.
126 m²

Unit 06
2 Bedroom Apt.
124 m²





Unit 05 – 2 Bedroom Apt.
124 m²

Entrance Lobby	1.90 × 1.40
Reception & Dining	5.80 × 4.20
Terrace 01	4.30 × 1.30
Lobby	1.70 × 1.20
Master Bedroom	4.00 × 3.60
Terrace 02	1.70 × 1.20
Dressing Room 01	2.40 × 1.55
Master Bathroom	2.40 × 1.80
Bedroom	3.60 × 3.30
Bedroom Lobby	1.90 × 1.20
Dressing Room 02	2.30 × 1.80
Bathroom	3.30 × 1.70
Kitchen	3.30 × 2.65

Unit 06 – 2 Bedroom Apt.
126 m²

Entrance Lobby	3.40 × 1.40
Reception & Dining	5.80 × 4.20
Terrace 01	4.40 × 1.55
Lobby	1.70 × 1.20
Master Bedroom	4.00 × 3.60
Terrace 02	1.60 × 1.20
Dressing Room 01	2.40 × 1.55
Master Bathroom	2.40 × 1.80
Bedroom	3.60 × 3.00
Bedroom Lobby	1.50 × 1.20
Dressing Room 02	2.30 × 1.40
Bathroom	3.30 × 1.70
Kitchen	3.30 × 2.65

Unit 05 – 2 Bedroom Apt.
126 m²

Entrance Lobby	3.40 × 1.40
Reception & Dining	5.80 × 4.20
Terrace 01	4.40 × 1.55
Lobby	1.70 × 1.20
Master Bedroom	4.00 × 3.60
Terrace 02	1.60 × 1.20
Dressing Room 01	2.40 × 1.55
Master Bathroom	2.40 × 1.80
Bedroom	3.60 × 3.00
Bedroom Lobby	1.50 × 1.20
Dressing Room 02	2.30 × 1.40
Bathroom	3.30 × 1.70
Kitchen	3.30 × 2.65

Unit 06 – 2 Bedroom Apt.
126 m²

Entrance Lobby	1.90 × 1.40
Reception & Dining	5.80 × 4.20
Terrace 01	4.30 × 1.55
Lobby	1.70 × 1.20
Master Bedroom	4.00 × 3.60
Terrace 02	1.70 × 1.20
Dressing Room 01	2.40 × 1.55
Master Bathroom	2.40 × 1.80
Bedroom	3.60 × 3.30
Bedroom Lobby	1.90 × 1.20
Dressing Room 02	2.30 × 1.80
Bathroom	3.30 × 1.70
Kitchen	3.30 × 2.65

Unit 05 – 2 Bedroom Apt.
126 m²

Entrance Lobby	3.40 × 1.40
Reception & Dining	5.80 × 4.20
Terrace 01	4.40 × 1.55
Lobby	1.70 × 1.20
Master Bedroom	4.00 × 3.60
Terrace 02	1.60 × 1.20
Dressing Room 01	2.40 × 1.55
Master Bathroom	2.40 × 1.80
Bedroom	3.60 × 3.00
Bedroom Lobby	1.50 × 1.20
Dressing Room 02	2.30 × 1.40
Bathroom	3.30 × 1.70
Kitchen	3.30 × 2.65

Unit 06 – 2 Bedroom Apt.
124 m²

Entrance Lobby	1.90 × 1.40
Reception & Dining	5.80 × 4.20
Terrace 01	4.30 × 1.30
Lobby	1.70 × 1.20
Master Bedroom	4.00 × 3.60
Terrace 02	1.70 × 1.20
Dressing Room 01	2.40 × 1.55
Master Bathroom	2.40 × 1.80
Bedroom	3.60 × 3.30
Bedroom Lobby	1.90 × 1.20
Dressing Room 02	2.30 × 1.80
Bathroom	3.30 × 1.70
Kitchen	3.30 × 2.65

Second Floor Apartments

Building 3 Building 2 Building 1

BUILDING 3

Unit 07
2 Bedroom Apt.
126 m²

Unit 08
2 Bedroom Apt.
126 m²

BUILDING 2

Unit 07
2 Bedroom Apt.
126 m²

Unit 08
2 Bedroom Apt.
126 m²

BUILDING 1

Unit 07
2 Bedroom Apt.
126 m²

Unit 08
2 Bedroom Apt.
126 m²





Unit 07 – 2 Bedroom Apt.
126 m²

Entrance Lobby	1.90 × 1.40
Reception & Dining	7.40 × 4.20
Lobby	1.70 × 1.20
Master Bedroom	4.00 × 3.60
Terrace 01	1.70 × 1.20
Dressing Room	2.40 × 1.55
Master Bathroom	2.40 × 1.80
Bedroom	3.60 × 3.60
Terrace 02	3.70 × 1.70
Bathroom	3.30 × 1.70
Kitchen	3.30 × 2.65

Unit 08 – 2 Bedroom Apt.
126 m²

Entrance Lobby	3.40 × 1.40
Reception & Dining	7.35 × 4.20
Lobby	1.70 × 1.20
Master Bedroom	4.00 × 3.60
Terrace	1.55 × 1.20
Dressing Room 01	2.40 × 1.55
Master Bathroom	2.40 × 1.80
Bedroom	3.60 × 3.00
Bedroom Lobby	1.50 × 1.20
Dressing Room 02	2.30 × 1.40
Bathroom	3.30 × 1.70
Kitchen	3.30 × 2.65

Unit 07 – 2 Bedroom Apt.
126 m²

Entrance Lobby	3.40 × 1.40
Reception & Dining	7.35 × 4.20
Lobby	1.70 × 1.20
Master Bedroom	4.00 × 3.60
Terrace	1.55 × 1.20
Dressing Room 01	2.40 × 1.55
Master Bathroom	2.40 × 1.80
Bedroom	3.60 × 3.00
Bedroom Lobby	1.50 × 1.20
Dressing Room 02	2.30 × 1.40
Bathroom	3.30 × 1.70
Kitchen	3.30 × 2.65

Unit 08 – 2 Bedroom Apt.
126 m²

Entrance Lobby	1.90 × 1.40
Reception & Dining	7.40 × 4.20
Lobby	1.70 × 1.20
Master Bedroom	4.00 × 3.60
Terrace 01	1.70 × 1.20
Dressing Room	2.40 × 1.55
Master Bathroom	2.40 × 1.80
Bedroom	3.60 × 3.60
Terrace 02	3.70 × 1.70
Bathroom	3.30 × 1.70
Kitchen	3.30 × 2.65

Unit 07 – 2 Bedroom Apt.
126 m²

Entrance Lobby	3.40 × 1.40
Reception & Dining	7.35 × 4.20
Lobby	1.70 × 1.20
Master Bedroom	4.00 × 3.60
Terrace	1.55 × 1.20
Dressing Room 01	2.40 × 1.55
Master Bathroom	2.40 × 1.80
Bedroom	3.60 × 3.00
Bedroom Lobby	1.50 × 1.20
Dressing Room 02	2.30 × 1.40
Bathroom	3.30 × 1.70
Kitchen	3.30 × 2.65

Unit 08 – 2 Bedroom Apt.
126 m²

Entrance Lobby	1.90 × 1.40
Reception & Dining	7.40 × 4.20
Lobby	1.70 × 1.20
Master Bedroom	4.00 × 3.60
Terrace 01	1.70 × 1.20
Dressing Room	2.40 × 1.55
Master Bathroom	2.40 × 1.80
Bedroom	3.60 × 3.60
Terrace 02	3.70 × 1.70
Bathroom	3.30 × 1.70
Kitchen	3.30 × 2.65

Third Floor Apartments

Building 3 Building 2 Building 1

BUILDING 3

Unit 11
2 Bedroom Apt.
124 m²

Unit 12
2 Bedroom Apt.
126 m²

BUILDING 2

Unit 11
2 Bedroom Apt.
126 m²

Unit 12
2 Bedroom Apt.
124 m²

BUILDING 1

Unit 11
2 Bedroom Apt.
126 m²

Unit 12
2 Bedroom Apt.
124 m²





Unit 11 – 2 Bedroom Apt.
124 m²

Entrance Lobby	1.90 X 1.40
Reception & Dining	5.80 X 4.20
Terrace 01	4.40 X 1.45
Lobby	1.70 X 1.20
Master Bedroom	4.00 X 3.85
Terrace 02	1.70 X 1.20
Dressing Room 01	2.40 X 1.55
Master Bathroom	2.40 X 1.80
Bedroom	3.60 X 3.00
Bedroom Lobby	1.50 X 1.20
Dressing Room 02	2.30 X 1.40
Bathroom	3.30 X 1.70
Kitchen	3.30 X 2.65

Unit 12 – 2 Bedroom Apt.
126 m²

Entrance Lobby	3.40 × 1.40
Reception & Dining	7.35 × 4.20
Lobby	1.65 × 1.20
Master Bedroom	4.00 × 3.60
Terrace 01	1.70 × 1.20
Dressing Room	2.40 × 1.55
Master Bathroom	2.40 × 1.80
Bedroom	3.60 × 3.50
Terrace 02	3.70 × 1.40
Bathroom	3.30 × 1.70
Kitchen	3.30 × 2.65

Unit 11 – 2 Bedroom Apt.
126 m²

Entrance Lobby	3.40 × 1.40
Reception & Dining	7.35 × 4.20
Lobby	1.65 × 1.20
Master Bedroom	4.00 × 3.60
Terrace 01	1.70 × 1.20
Dressing Room	2.40 × 1.55
Master Bathroom	2.40 × 1.80
Bedroom	3.60 × 3.50
Terrace 02	3.70 × 1.40
Bathroom	3.30 × 1.70
Kitchen	3.30 × 2.65

Unit 12 – 2 Bedroom Apt.
124 m²

Entrance Lobby	1.90 × 1.40
Reception & Dining	5.80 × 4.20
Terrace 01	4.40 × 1.55
Lobby	1.70 × 1.20
Master Bedroom	4.00 × 3.85
Terrace 02	1.70 × 1.20
Dressing Room 01	2.40 × 1.55
Master Bathroom	2.40 × 1.80
Bedroom	3.60 × 3.00
Bedroom Lobby	1.50 × 1.20
Dressing Room 02	2.30 × 1.40
Bathroom	3.30 × 1.70
Kitchen	3.30 × 2.65

Unit 11 – 2 Bedroom Apt.
126 m²

Entrance Lobby	3.40 × 1.40
Reception & Dining	7.35 × 4.20
Lobby	1.65 × 1.20
Master Bedroom	4.00 × 3.60
Terrace 01	1.70 × 1.20
Dressing Room	2.40 × 1.55
Master Bathroom	2.40 × 1.80
Bedroom	3.60 × 3.50
Terrace 02	3.70 × 1.40
Bathroom	3.30 × 1.70
Kitchen	3.30 × 2.65

Unit 12 – 2 Bedroom Apt.
124 m²

Entrance Lobby	1.90 × 1.40
Reception & Dining	5.80 × 4.20
Terrace 01	4.40 × 1.55
Lobby	1.70 × 1.20
Master Bedroom	4.00 × 3.85
Terrace 02	1.70 × 1.20
Dressing Room 01	2.40 × 1.55
Master Bathroom	2.40 × 1.80
Bedroom	3.60 × 3.00
Bedroom Lobby	1.50 × 1.20
Dressing Room 02	2.30 × 1.40
Bathroom	3.30 × 1.70
Kitchen	3.30 × 2.65

Seven

Disclaimer: Drawings scales are as shown in their relevant pages. If no scale is shown or written, the drawing is not to scale and is intended for illustrative concept purposes. Any areas dimensions shown in this package are subject to vary within further design stages against final Architecture, Landscape design/brief, engineering requirements & municipal regulations. The final areas/dimensions shall be confirmed after conducting coordination procedures with the involved departments & consultants (e.g. Architecture - Roads - Infrastructure, etc.) to conclude the best possible outcomes as per regulations, standards and construction cost. All included calculations - found in this package - in terms of areas, locations & configurations could vary as per any change in the municipal, architecture & operators requirements.

PRE
The Developer.





The Developer

Since its inception in the market, PRE has gained a trusted reputation for its multidisciplinary expertise in the financial, and industrial sector, in addition to real estate development and construction. The company aims at reimagining integrated living from an innovative perspective to deliver exceptional communities that not only enrich the lives of its residents, but also inspire personal growth and natural harmony at every touch point.

PRE's track record of successes include an impressive portfolio of residential developments in prime locations across Egypt -from city to sea - including Stone Residences, New Cairo, Hadaba and Ivoire, 6th of October, Jebal Sokhna and finally The Brooks in the 5th Settlement. The company's commitment to world-class quality, refined architecture and best in class amenities has resulted in 2790 satisfied clients, served by 156 dedicated employees in 5 branches to generate 8 Billion EGP in sales, as well as a timely delivery of 790 units.

Urban Design and Architecture by YBA Architects.

Yasser Al Beltagy Architects (YBA) was established in 1995, in Cairo, Egypt. Led by the founder and chief architect Yasser AL-Beltagy. YBA is a leading multidisciplinary design firm that covers a wide range of specialties and services: architecture, urban, landscape, and interior design. Over the years, YBA has worked on more than 1,200 projects that range from residential, public, corporates & offices, educational & cultural, hotels & resorts, recreational, industrial, and religious to commercial projects.

YBA's extensive collective experience and attention to detail has resulted in unexpected, inspirational, and trend-setting design solutions. Moreover, YBA won 26 global awards out of 33 competitions. At YBA, our work is driven by the full understanding of our clients' needs and our belief that every building should be unique in its nature. Our aim is to design spaces which consider both the aspects of concept and context equally so that when the bigger picture is taken into consideration the harmony of both speaks volumes.



YBA

Facade Design & Visualisation by TA Design Studio

TA Design Studio is a boutique architectural design studio concept that, since its inception in 2017 in Dubai, UAE, has been striving to stretch the limits of commercially abundant projects and provide top-notch architectural solutions. TADS seeks to respond to clients' visions and exceed expectations, where architectural design seeks

to transcend the everyday monotone. Every project is an invitation to enter such explorations to push boundaries and create enduring experiences. From Dubai on to Muscat, London, Neom, Cairo and many more, and now finally in 6th of October City, TA Design Studio presents Curated Living Experiences at Ivoire.

PREDEVELOPMENTS.COM

Head Office

165 Orouba St., Salah Salem, Cairo.

Sales Offices

Point 90, New Cairo.

Stone Residence, Ring Road, New Cairo.

Park St., 6th of October.

Hadaba, 6th of October.

Jebal, Sokhna.

IVOIRE

Jebal
EL SOKHNA

STONE *Residence*
NEW CAIRO

HADABA
6th of October

**P
R E**